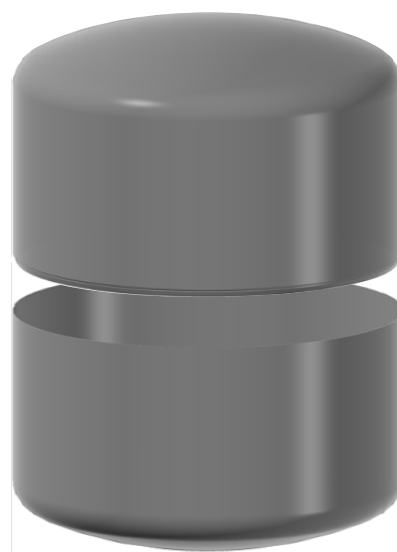
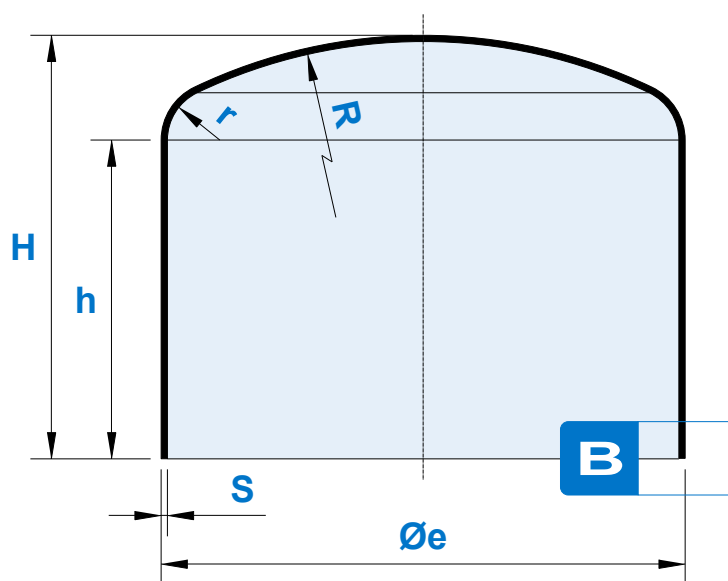
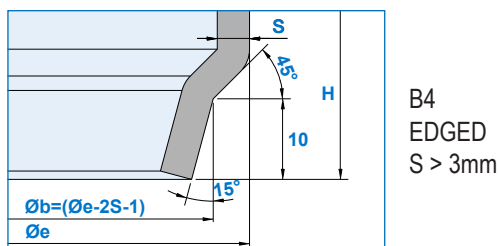
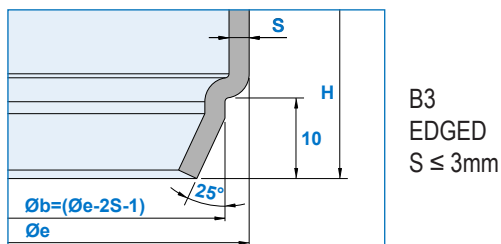
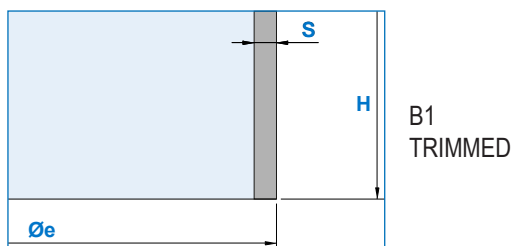


# DISHED HEADS FOR TWO-PIECE TANKS

Øe mm	H mm	R mm	r mm	h* mm	S mm	V* mm	P** kg/mm
133	120	106.4	20.5	85	2	1.3	0.4
154	140	123.2	23.7	100	2	2.1	0.6
160	128	160	16	95	2 - 3	2.1	0.6
200	160	160	30.7	108	2 - 2.5	4.1	0.9
200	160	200	20	120	2 - 3	4.3	0.9
220	176	176	33.8	119	2 - 3	5.6	1
220	176	220	22	132	2 - 3	5.7	1.1
260	225	208	40	158	2 - 4	10.1	1.6
280	224	224	43	152	3 - 4	11.6	1.7
300	240	240	46.2	163	2 - 4	14.4	1.9
350	280	280	53.8	190	2 - 4	23	2.6
400	320	400	40	241	1.5 - 3	35.4	3.6
400	320	320	61.5	217	1.5 - 3	34.5	3.5
450	360	360	69.2	244	2 - 4	49.3	4.4
500	400	400	76.9	272	3 - 4	67.9	5.4
500	400	500	50	302	2 - 3.5	69.7	5.6
550	310	440	84.6	169	3 - 5	60.3	4.8
600	310	480	92.3	156	3 - 4	70.7	5.3
640	390	950	90	267	2 - 2.5	112.1	7.5
700	240	700	70	103	3 - 4	72	5.5
800	483	1500	90	309	2 - 3	222.2	11.9

## TYPES OF ACHIEVABLE EDGES



\* the dimension h and the capacity V have been calculated for trimmed dished heads with S = 3mm | \*\*the theoretical weight indicated is to be multiplied by the thickness in mm



Zapè srl

Via del Perlar 98 • 37135 Verona VR • Italy

w. www.zape.it • t. +39 045 500855 • e. info@zape.it